



Dirty water



Domestic use



Civil use

※ Innovative pumps:
high performance,
quality, and durability



PERFORMANCE RANGE

- Flow rate up to **400 l/min** (24 m³/h)
- Head up to **13 m**

INSTALLATION AND USE

ZXm 2 pumps are designed for sewage drainage in **domestic and civil settings**.

- ※ Featuring a **VORTEX** impeller, these pumps efficiently handle solids up to **40 mm** in diameter, with a unique design that prevents clogging.

INCLUDES

- ※ **5 m** power cable
- ※ Float switch
- ※ Hose connector **Ø 50 mm**

APPLICATION LIMITS

- Maximum operating depth below water level up to **5 m** (with an appropriately sized power cable)
- Liquid temperature up to **+40 °C**
- Suspended solids transfer:
 - up to **Ø 30 mm** for ZXm 2/30
 - up to **Ø 40 mm** for ZXm 2/40
- **Minimum immersion for continuous service:**
 - **265 mm** for ZXm 2/30
 - **275 mm** for ZXm 2/40

AVAILABLE UPON REQUEST

- ※ Pumps with **10 m** power cable
- ※ Different voltage requirements 60 Hz frequency

PATENTS - TRADE MARKS - MODELS

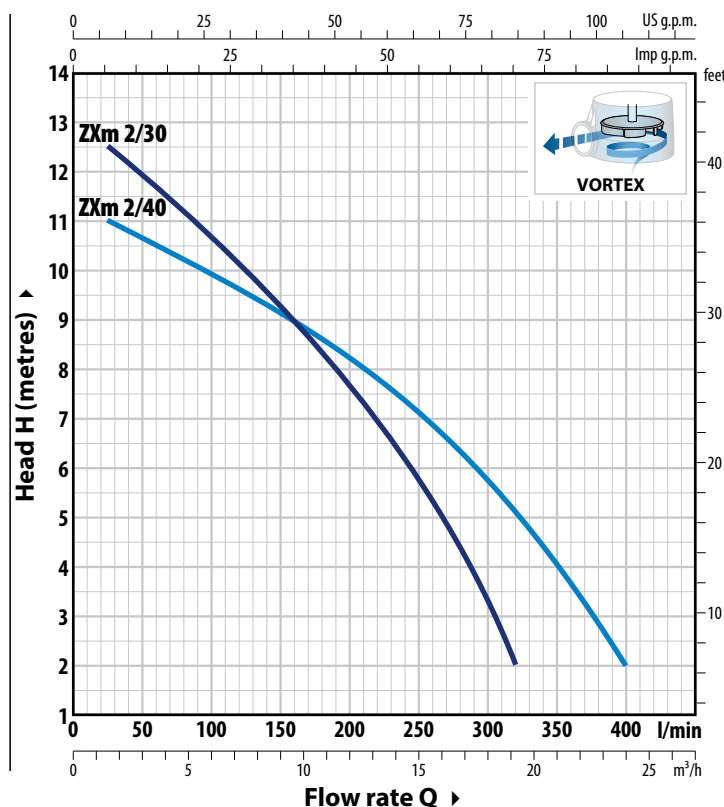
- Patent No. EP2313658
- Patent No. IT0001428923

ABSORPTION

TYPE	VOLTAGE
Single-phase	230 V
ZXm 2/30	4.0 A
ZXm 2/40	4.0 A

CURVES AND PERFORMANCE DATA

50 Hz



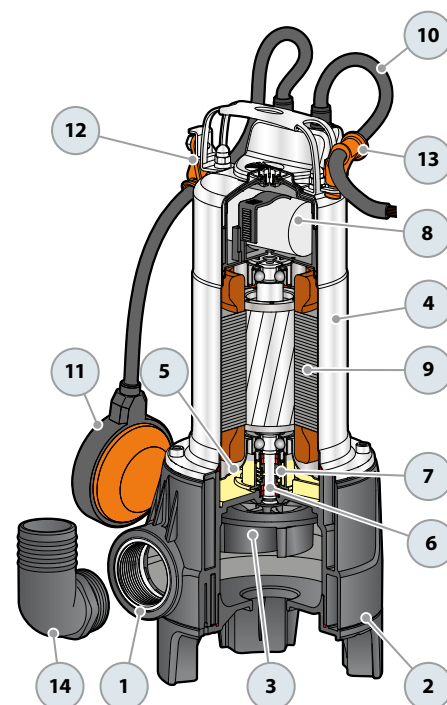
TYPE	POWER (P ₂)		Q												
	kW	HP		m ³ /h	0	1.5	3	6	9	12	15	18	19.2	21	24
Single-phase				l/min	0	25	50	100	150	200	250	300	320	350	400
ZXm 2/30	0.55	0.75	H metres		13	12.5	11.8	10.6	9.3	7.6	5.8	3.3	2		
ZXm 2/40	0.55	0.75			11.5	11	10.6	9.8	9.2	8.2	7.2	5.7	5.2	4	2

Q = Flow rate H = Total manometric head

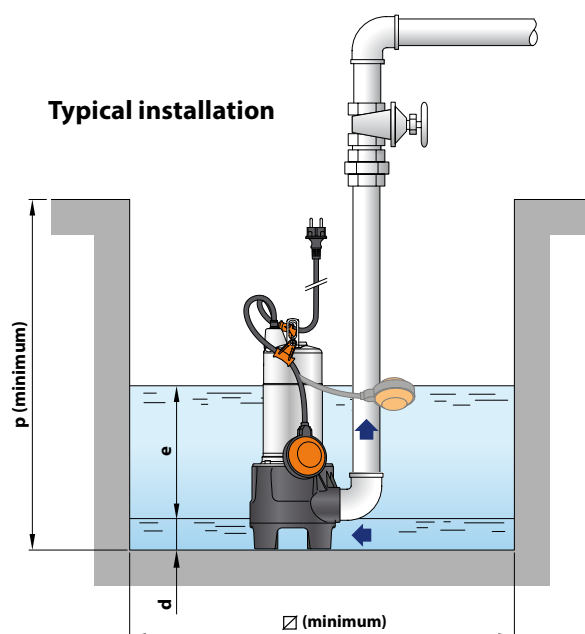
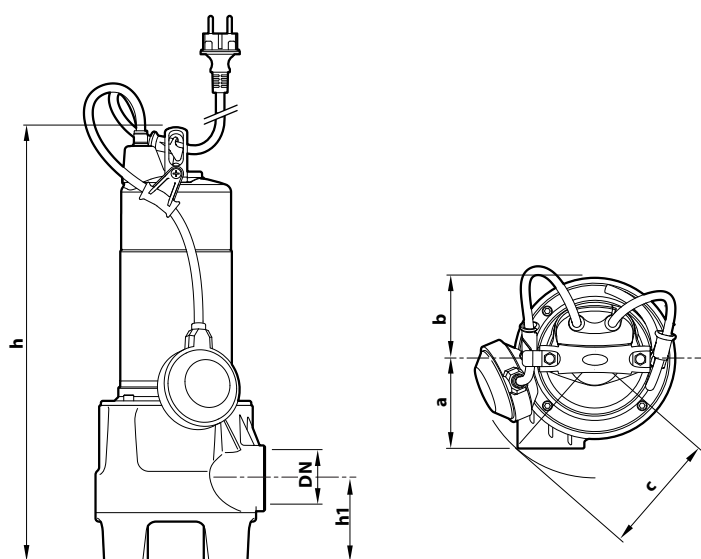
Performance curves comply with EN ISO 9906 Grade 3B tolerance limits.

MATERIALS AND COMPONENTS

1 Pump body	Fibreglass-filled technopolymer with ISO 228/1 threaded delivery port (5-year warranty)		
2 Base	Glass-fibre reinforced technopolymer		
3 Impeller	VORTEX type made of glass-fibre reinforced technopolymer		
4 Motor sleeve	Stainless steel AISI 304		
5 Motor cover	Stainless steel AISI 304		
6 Motor shaft	Stainless steel AISI 431		
7 Double mechanical seal with interposed oil chamber			
Seal	Shaft	Location	Materials
MG1-14D SIC	Ø 14 mm	Motor side	SiC / Graphite / NBR
		Pump side	SiC / SiC / NBR
8 Capacitor			
9 Electric motor	Single-phase 230 V - 50 Hz with winding integrated thermal motor protection - Insulation: class F - Protection rating: IP X8		
10 Power cord	Type 'H07 RN-F' with Schuko plug ※ Standard length 5 metres		
11 Float switch			
12 Tilting device for the float cable	Patent No. IT0001428923		
13 Power cable strain relief	Patent No. EP2313658		
14 Hose connector Ø 50 mm (included in delivery)			



DIMENSIONS AND WEIGHT



TYPE	PORT	Passage of solid bodies	DIMENSIONS mm										kg	PALLET CAPACITY
Single-phase	DN		a	b	c	h	h1	d	e	p	Ø		1~	
ZXm 2/30	1½"	Ø 30 mm	90	81	118	412	73	50	adjustable	500	500		10.8	54
ZXm 2/40		Ø 40 mm				422	83						10.8	54