



Sewage



Civil use



Industrial use

### ※ Submersible pumps 4 poles (1450 min<sup>-1</sup>)



#### PERFORMANCE RANGE

- Flow rate up to **900 l/min** (54 m<sup>3</sup>/h)
- Head up to **7 m**

#### INSTALLATION AND USE

The **VX4** series is constructed from thick cast iron, offering exceptional robustness, abrasion resistance, and longevity. Equipped with **VORTEX**-type impellers, known for their reliability and minimal clogging risk, these pumps are versatile for handling sewage with suspended solids up to **80 mm** in diameter, as well as wastewater, rainwater, city sewage, and industrial wastewater. They are suitable for a wide range of applications, including sewers, tunnels, excavations, canals, and underground parking facilities.

#### ELECTRIC MOTOR

- ※ The electric motor is safeguarded by a special three-phase thermal protector, situated within the motor, which activates in case of overheating or abnormal power consumption.

#### INCLUDES

- ※ Power cable length **10 m**

#### APPLICATION LIMITS

- Depth below water level up to **10 m** (with an appropriately sized power cable)
- Liquid temperature up to **+40 °C**
- Suspended solids transfer:
  - up to **Ø 50 mm** for VX4-10/50
  - up to **Ø 65 mm** for VX4-10/65
  - up to **Ø 80 mm** for VX4-10/80
- **Minimum immersion for continuous service: 500 mm**

#### AVAILABLE UPON REQUEST

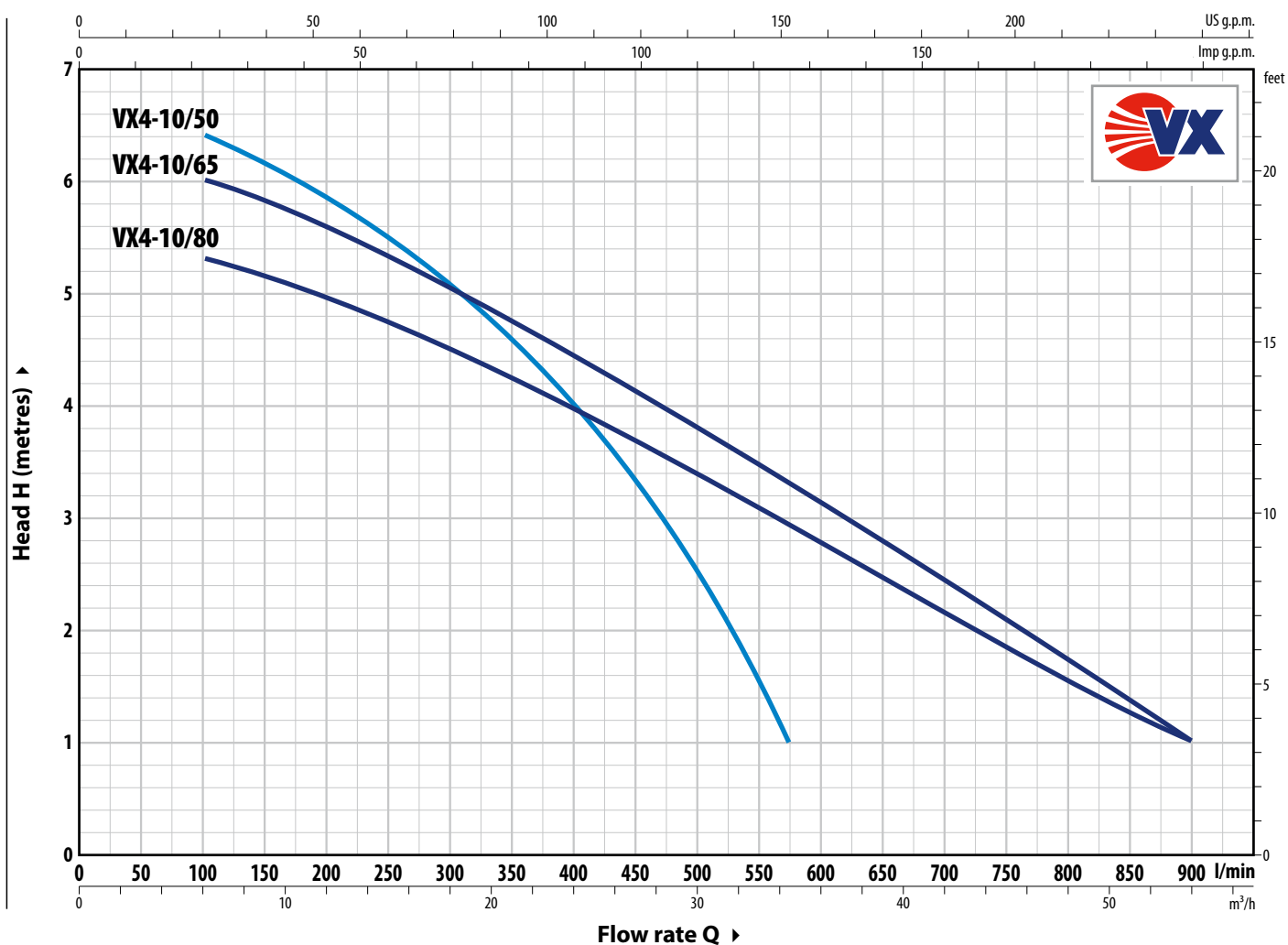
- ※ Different voltage requirements 60 Hz frequency

#### PATENTS - TRADE MARKS - MODELS

- Registered Community Model No. 003863158-0002

## CURVES AND PERFORMANCE DATA – n= 1450 min<sup>-1</sup>

**50 Hz**



TYPE Three-phase	POWER (P <sub>2</sub> )		Q	m <sup>3</sup> /h								
	kW	HP		0	6	12	24	30	34.5	36	45	54
				0	100	200	400	500	575	600	750	900
VX4-10/50	0.75	1	H metres	7	6.4	5.8	5	4	2.5	1		
VX4-10/65	0.75	1		6	6	5.6	5	4.4	3.8	3.3	2	1
VX4-10/80	0.75	1		5.5	5.3	4.9	4.5	3.9	3.4	2.9	1.8	1

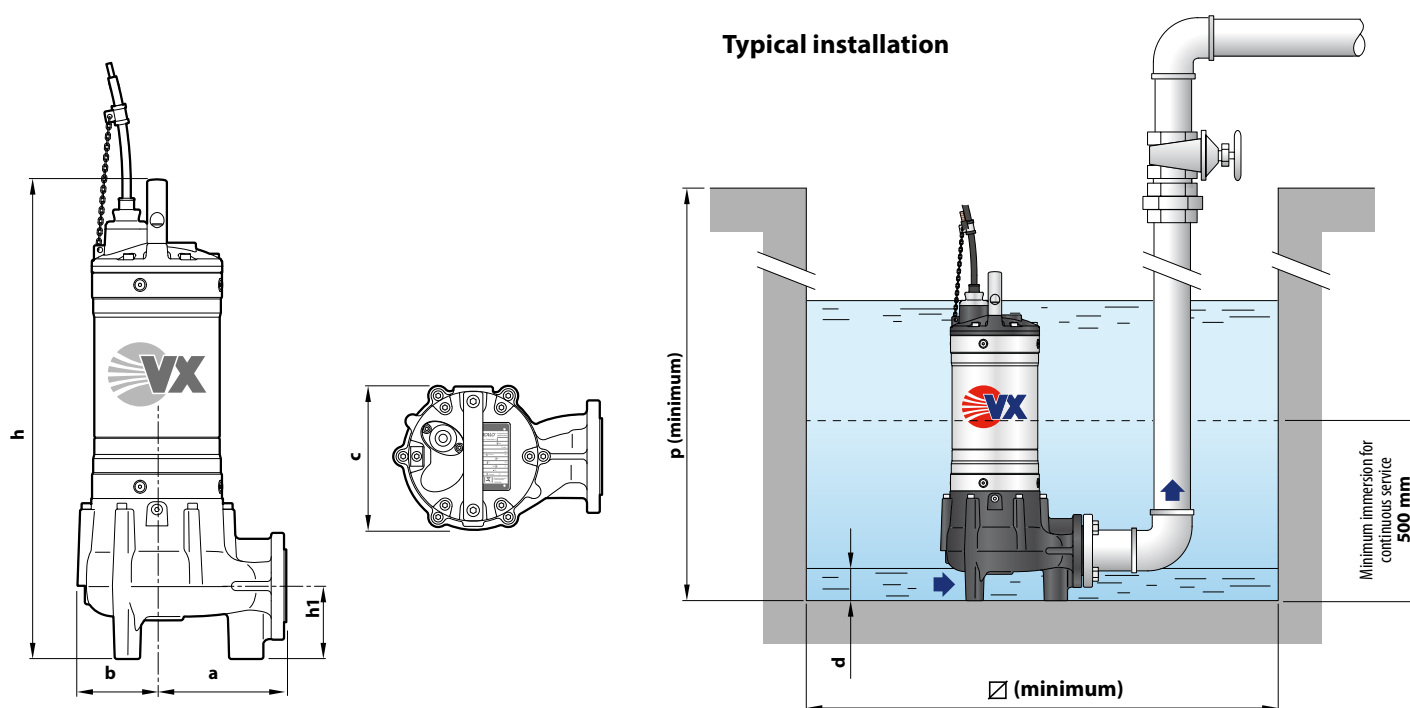
Q = Flow rate H = Total manometric head

Performance curves comply with EN ISO 9906 Grade 3B tolerance limits.

### ABSORPTION

TYPE	VOLTAGE
<b>Three-phase</b>	<b>400 V</b>
<b>VX4-10/50</b>	2.7 A
<b>VX4-10/65</b>	2.7 A
<b>VX4-10/80</b>	2.7 A

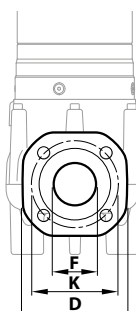
### DIMENSIONS AND WEIGHT



TYPE	Passage of solid bodies	DIMENSIONS mm								kg
		a	b	c	h	h1	d	p	Ø	
<b>Three-phase</b>										3~
<b>VX4-10/50</b>	<b>Ø 50 mm</b>	170	106	193	602	100	55	700	500	47.3
<b>VX4-10/65</b>	<b>Ø 65 mm</b>	170	107	196	630	121	70	800	500	50.6
<b>VX4-10/80</b>	<b>Ø 80 mm</b>	178	107	210	655	150	85	800	500	52.1

### PORT FLANGE

TYPE	FLANGE	F	K	D	HOLES	
<b>Three-phase</b>	<b>DN</b>		mm	mm	N°	Ø (mm)
<b>VX4-10/50</b>	<b>50</b> (PN10)	2"	125	150	4	18
<b>VX4-10/65</b>	<b>65</b> (PN10)	2½"	145	185	8	18
<b>VX4-10/80</b>	<b>80</b> (PN10)	3"	160	200	8	18



### PALLET CAPACITY

TYPE	NO. OF PUMPS
<b>Three-phase</b>	
<b>VX4-10/50</b>	12
<b>VX4-10/65</b>	12
<b>VX4-10/80</b>	12

## MATERIALS AND COMPONENTS

**1 Pump body** Cast iron with cataphoresis treatment

**2 Impeller** Cast iron VORTEX type with cataphoresis treatment

**3 Motor sleeve** Stainless steel **AISI 304**

**4 Motor cover** Cast iron with cataphoresis treatment

**5 Motor shaft** Stainless steel **AISI 431**

### 6 Double mechanical seal with interposed oil chamber

Seal	Shaft	Location	Materials
<b>AR-27</b>	Ø 27 mm	Motor side	Silicon carbide / Graphite / NBR
<b>AR-25</b>	Ø 25 mm	Pump side	Silicon carbide/Silicon carbide/NBR

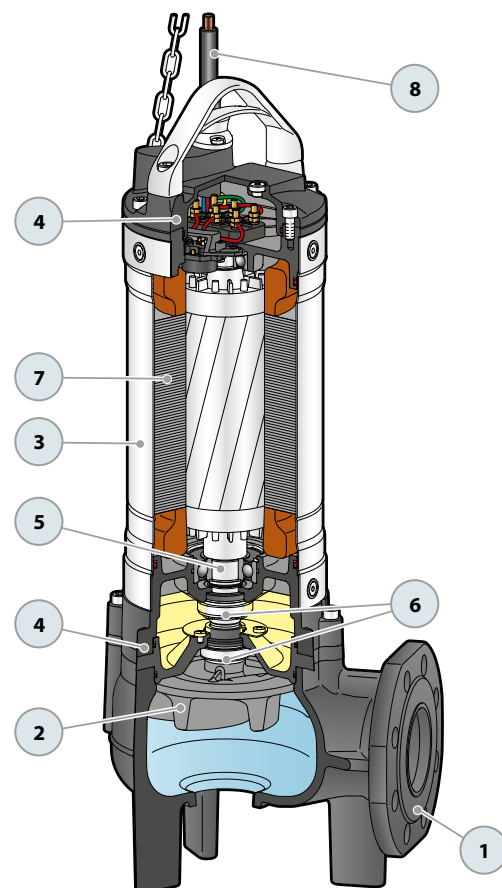
### 7 Electric Motor

Three-phase 400 V - 50Hz  
with winding integrated thermal three-phase motor  
protection

- Insulation: class F
- Protection rating: IP X8

### 8 Power cord

※ 10 metres 'H07 RN-F' type



# SEWAGE LIFTING SYSTEM VX4 - BC4

## VERSION WITH HORIZONTAL DELIVERY AND 3/4" GUIDE PIPES

For <b>VX4 /50</b>	Code ASSPVX50	<b>DN 2</b>
--------------------	---------------	-------------

※ Kit consisting of:



Coupling foot



Guide rail



Support for guide tubes



## VERSION WITH VERTICAL DELIVERY AND 3/4" GUIDE PIPES

For <b>VX4 /50</b>	Code ASSPVX503V	<b>DN 2 1/2"</b>
For <b>VX4 /65</b>	Code ASSPVX653V	<b>DN 3"</b>
For <b>BC4 /50</b>	Code ASSVXCF071V	

## VERSION WITH VERTICAL DELIVERY AND 2" GUIDE TUBES

For <b>VX4 /50</b>	Code ASSPVX50V	<b>DN 3"</b>
For <b>VX4 /65</b>	Code ASSPVX65V	
For <b>VX4 /80, BC4 /50</b>	Code ASSVXCF0705V	

※ Kit consisting of:



Coupling foot complete with counterflange



Guide rail



Support for guide tubes



## ● ACCESSORIES AVAILABLE FOR ORDER

### RUNNING GUIDE

※ For VX4 /50 with Ø 3/4" guide tubes	Code ASSFL009
※ For VX4 /65 with Ø 3/4" guide tubes	Code ASSFL010
※ For BC4 /50 with Ø 3/4" guide tubes	Code ASSFL0018
※ For VX4 /50 with Ø 2" guide tubes	Code ASSFL050
※ For VX4 /65 with Ø 2" guide tubes	Code ASSFL065
※ For VX4 /80, BC4 /50 with Ø 2" guide tubes	Code ASSFL072

Complete with screws and seals

### INTERMEDIATE GUIDE TUBE SUPPORT

※ For Ø 3/4" guide tubes	Code 859SV340INTFA
※ For guide tubes Ø 2"	Code 859SV349INTFA

For reasons of stability, an intermediate support should be interposed:

- every 2 metres with 3/4" guide pipes (mandatory)
- every 3 metres with 2" guide tubes (recommended)

### GUIDE TUBE (AISI 304 stainless steel)

※ 2 metres Ø 3/4" guide tube	Code 54SARTG0052F
※ 3 metres Ø 3/4" guide tube	Code 54SARTG0053F
※ 6 metres Ø 3/4" guide tube	Code 54SARTG0056F
※ 3 metres Ø 2" guide tube	Code 54SARTG0063F
※ 6 metres guide tube Ø 2"	Code 54SARTG0066F



for Ø 3/4" guide tubes



for guide tubes Ø 2"



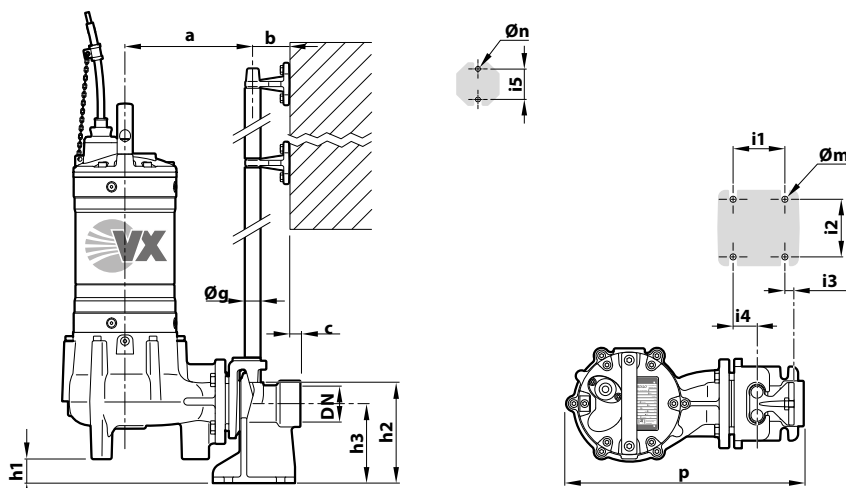
for Ø 3/4" guide tubes



for guide tubes Ø 2"

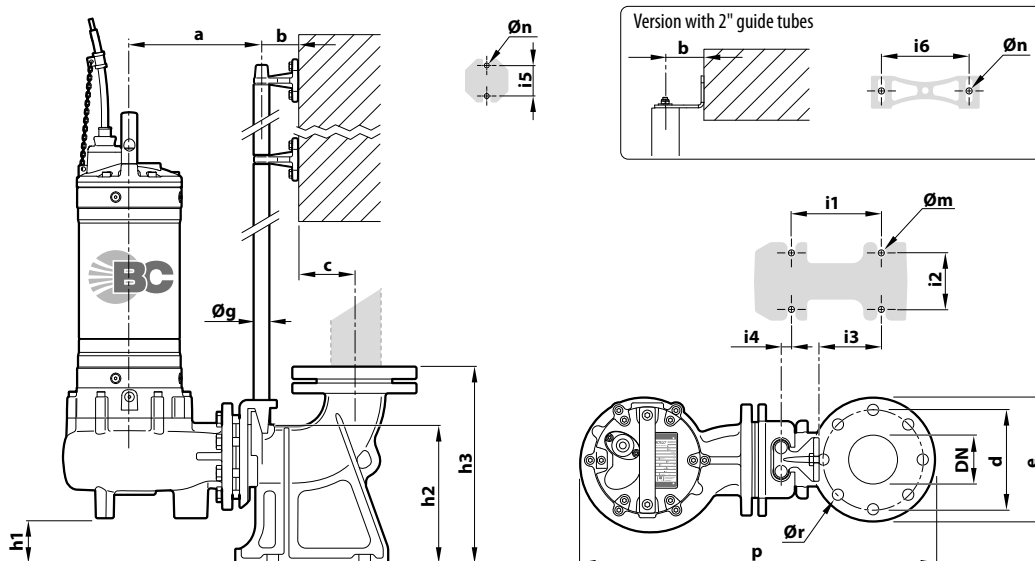


## DIMENSIONS (HORIZONTAL delivery version)



TYPE	Solid bodies mm	PORT DN	DIMENSIONS mm														
			a	b	c	p	h1	h2	h3	i1	i2	i3	i4	i5	Øg	Øm	Øn
<b>VX4 /50</b>	<b>Ø 50</b>	<b>2"</b>	214	61	17	400	30	165	130	85	94	16	40	50	¾"	12	11

## DIMENSIONS (Version with VERTICAL delivery)



### ※ Version with ¾" guide tubes

TYPE	Solid bodies mm	PORT DN	DIMENSIONS mm																	
			a	b	c	d	e	p	h1	h2	h3	i1	i2	i3	i4	i5	Øg	Øm	Øn	Ør
VX4 /50	Ø 50 mm	2½"	211	61	52	125	165	506	28	164	216	120	72	62	3	50	¾"	14	11	18
VX4 /65	Ø 65 mm	3"	213		69	150	190	537	48	216	280	130	112	84	15					
BC4 /50	Ø 50 mm		222					553	19											

### ※ Version with 2" guide tubes

TYPE	Solid bodies mm	PORT DN	DIMENSIONS mm																		
			a	b	c	d	e	p	h1	h2	h3	i1	i2	i3	i4	i5	i6	Øg	Øm	Øn	Ør
VX4 /50	Ø 50 mm	3"	319	86	95	160	200	706	107	264	392	250	150	34	–	80	186	2"	22	13.5	18
VX4 /65	Ø 65 mm		697					86													
VX4 /80	Ø 80 mm		714					57													
BC4 /50	Ø 50 mm		714					57													