



※ Submersible pumps 4 poles (1450 min⁻¹)



PERFORMANCE RANGE

- Flow rate up to **1200 l/min** (72 m³/h)
- Head up to **6 m**

INSTALLATION AND USE

The **BC4** series is constructed from thick stainless steel and cast iron, offering exceptional robustness, abrasion resistance, and durability. Equipped with a **TWO-CHANNEL** impeller, the pumps are designed to **drain sewage, sludge-mixed water, and activated and putrid sludge**. They are suitable for a wide range of applications, including sewers, tunnels, excavations, canals, and underground parking facilities.

ELECTRIC MOTOR

- ※ **The electric motor is safeguarded by a special three-phase thermal protector, situated within the motor, which activates in case of overheating or abnormal power consumption.**

INCLUDES

- ※ Power cable length **10 m**

APPLICATION LIMITS

- Depth below water level up to **10 m**
(with an appropriately sized power cable)
- Liquid temperature up to **+40 °C**
- Capable of processing suspended solids up to **Ø 50 mm**
- **Minimum immersion for continuous service: 500 mm**

AVAILABLE UPON REQUEST

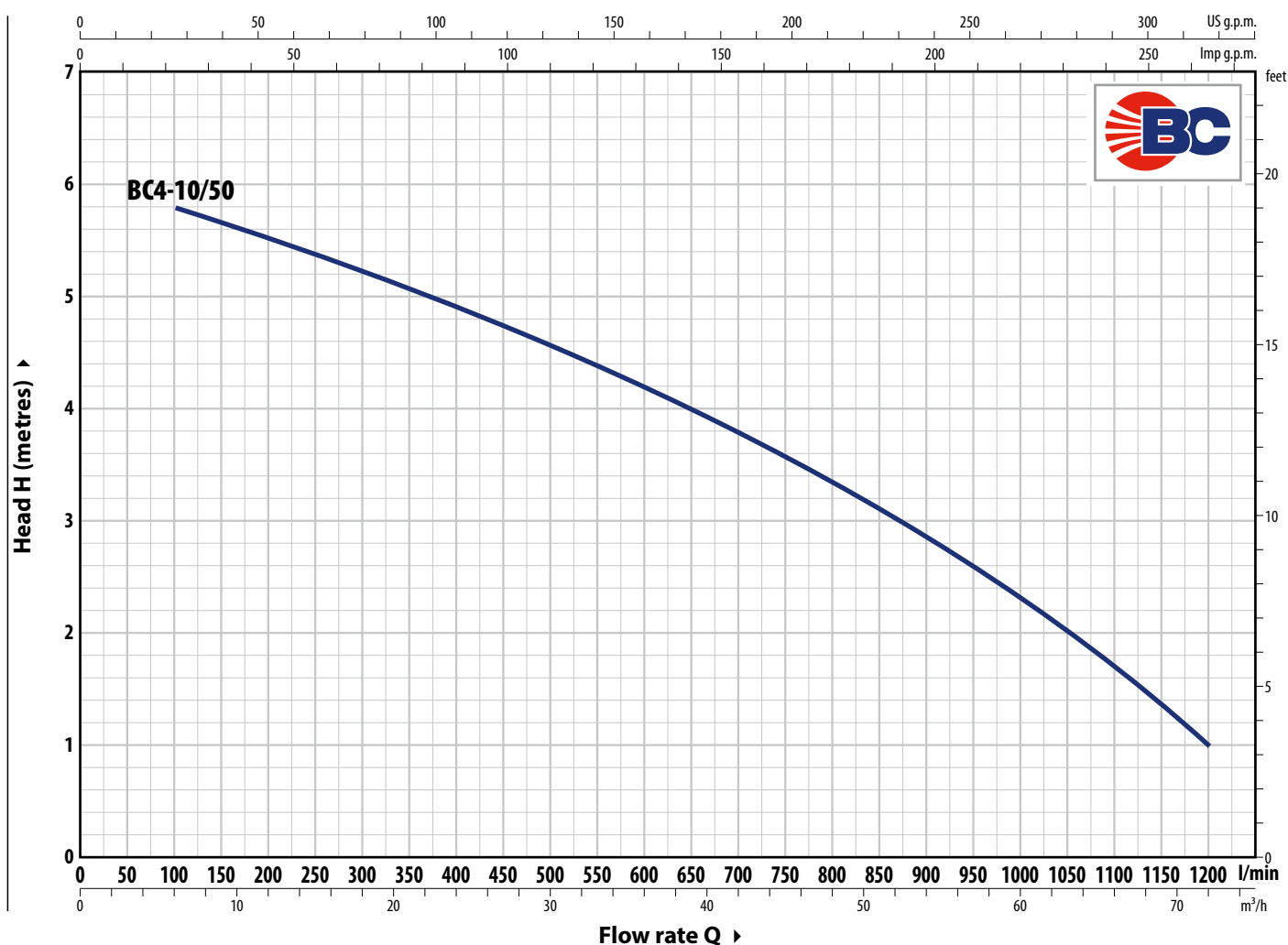
- ※ Different voltage requirements 60 Hz frequency

PATENTS - TRADE MARKS - MODELS

- Registered Community Model No. 003863158-0001

CURVES AND PERFORMANCE DATA – n= 1450 min⁻¹

50 Hz



TYPE	POWER (P ₂)		Q	m ³ /h	0	6	12	24	30	36	45	54	60	72
	kW	HP		l/min	0	100	200	400	500	600	750	900	1000	1200
BC4-10/50	0.75	1	H metres		6	6	5.9	5.3	5	4.4	3.6	2.7	2	1

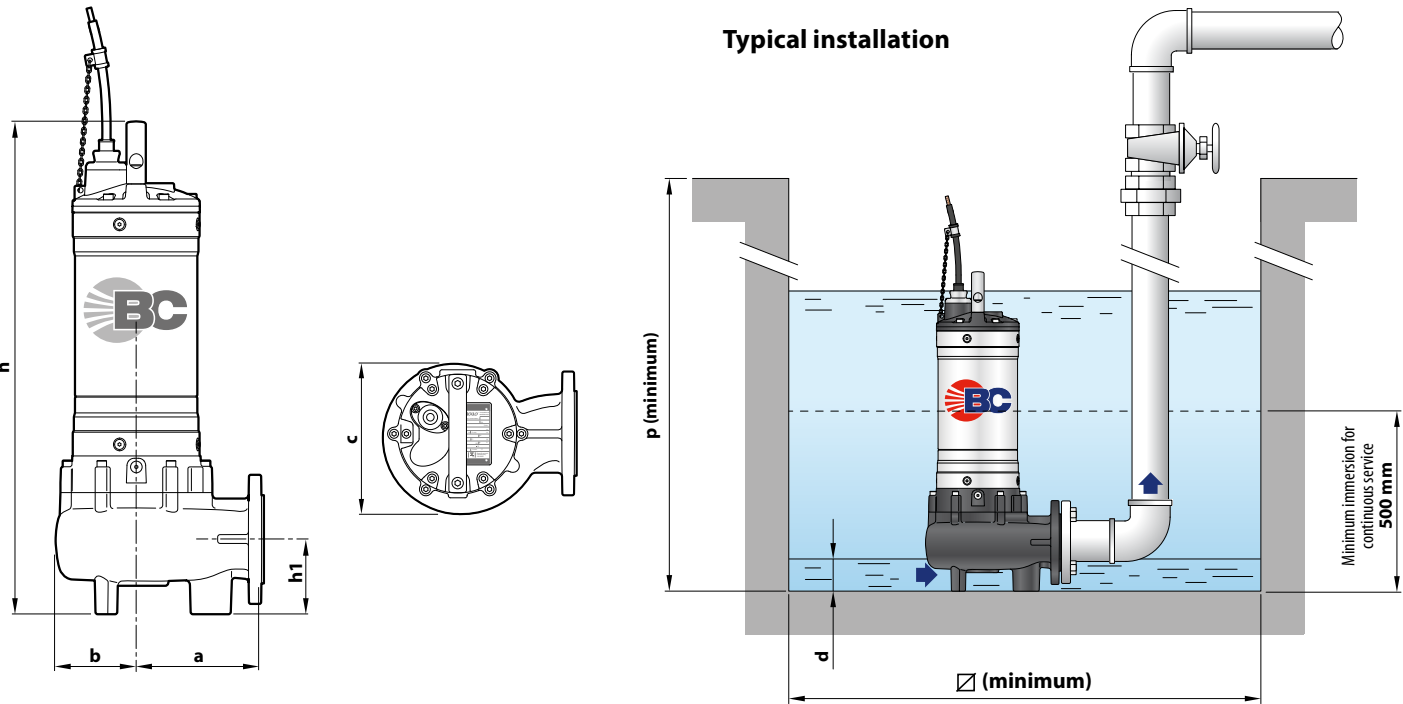
Q = Flow rate H = Total manometric head

Performance curves comply with EN ISO 9906 Grade 3B tolerance limits.

ABSORPTION

TYPE	VOLTAGE
Three-phase	400 V
BC4-10/50	2.7 A

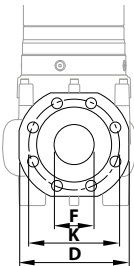
DIMENSIONS AND WEIGHT



TYPE	Passage of solid bodies	DIMENSIONS mm								3~
		a	b	c	h	h1	d	p	□	
BC4-10/50	Ø 50 mm	178	107	210	655	150	85	800	500	55.8

PORT FLANGE

TYPE	FLANGE	F	K	D	HOLES	
Three-phase	DN		mm	mm	N°	Ø mm)
BC4-10/50	80 (PN10)	3"	160	200	8	18



PALLET CAPACITY

TYPE	NO. OF PUMPS
Three-phase	
BC4-10/50	12

MATERIALS AND COMPONENTS

1 Pump body Cast iron with cathaphoresis treatment

2 Impeller TWO-CHANNEL cast iron type with cathaphoresis treatment

3 Motor sleeve Stainless steel **AISI 304**

4 Motor cover Cast iron with cathaphoresis treatment

5 Motor shaft Stainless steel **AISI 431**

6 Double mechanical seal with interposed oil chamber

Seal	Shaft	Location	Materials
AR-27	Ø 27 mm	Motor side	Silicon carbide / Graphite / NBR
AR-25	Ø 25 mm	Pump side	Silicon carbide/Silicon carbide/NBR

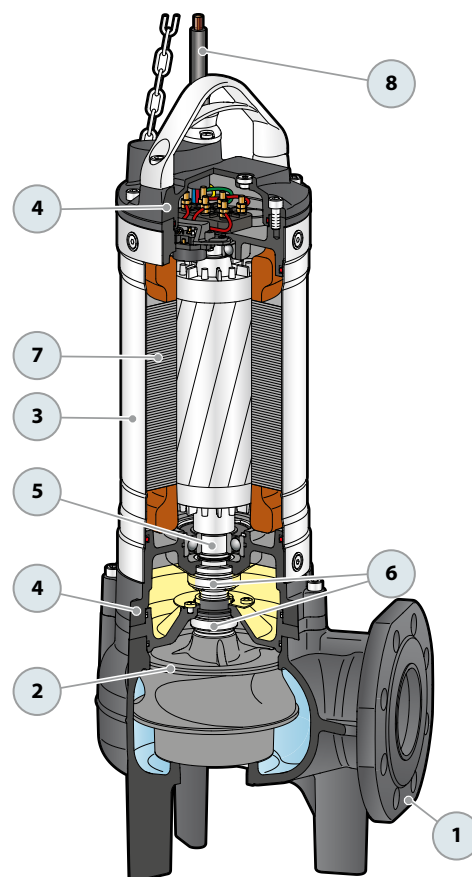
7 Electric Motor

Three-phase 400 V - 50Hz
with winding integrated thermal three-phase motor protection

- Insulation: class F
- Protection rating: IP X8

8 Power cord

※ 10 metres 'H07 RN-F' type



SEWAGE LIFTING SYSTEM VX4 - BC4

VERSION WITH HORIZONTAL DELIVERY AND 3/4" GUIDE PIPES

For VX4 /50	Code ASSPVX50	DN 2
--------------------	---------------	-------------

※ Kit consisting of:



Coupling foot



Guide rail



Support for guide tubes



VERSION WITH VERTICAL DELIVERY AND 3/4" GUIDE PIPES

For VX4 /50	Code ASSPVX503V	DN 2½"
For VX4 /65	Code ASSPVX653V	DN 3"
For BC4 /50	Code ASSVXCF071V	

VERSION WITH VERTICAL DELIVERY AND 2" GUIDE TUBES

For VX4 /50	Code ASSPVX50V	DN 3"
For VX4 /65	Code ASSPVX65V	
For VX4 /80, BC4 /50	Code ASSVXCF0705V	

※ Kit consisting of:



Coupling foot complete with counterflange



Guide rail



Support for guide tubes



● ACCESSORIES AVAILABLE FOR ORDER

RUNNING GUIDE

※ For VX4 /50 with Ø 3/4" guide tubes	Code ASSFL009
※ For VX4 /65 with Ø 3/4" guide tubes	Code ASSFL010
※ For BC4 /50 with Ø 3/4" guide tubes	Code ASSFL0018
※ For VX4 /50 with Ø 2" guide tubes	Code ASSFL050
※ For VX4 /65 with Ø 2" guide tubes	Code ASSFL065
※ For VX4 /80, BC4 /50 with Ø 2" guide tubes	Code ASSFL072

Complete with screws and seals

INTERMEDIATE GUIDE TUBE SUPPORT

※ For Ø 3/4" guide tubes	Code 859SV340INTFA
※ For guide tubes Ø 2"	Code 859SV349INTFA

For reasons of stability, an intermediate support should be interposed:

- every 2 metres with 3/4" guide pipes (mandatory)
- every 3 metres with 2" guide tubes (recommended)

GUIDE TUBE (AISI 304 stainless steel)

※ 2 metres Ø 3/4" guide tube	Code 54SARTG0052F
※ 3 metres Ø 3/4" guide tube	Code 54SARTG0053F
※ 6 metres Ø 3/4" guide tube	Code 54SARTG0056F
※ 3 metres Ø 2" guide tube	Code 54SARTG0063F
※ 6 metres guide tube Ø 2"	Code 54SARTG0066F



for Ø 3/4" guide tubes



for guide tubes Ø 2"



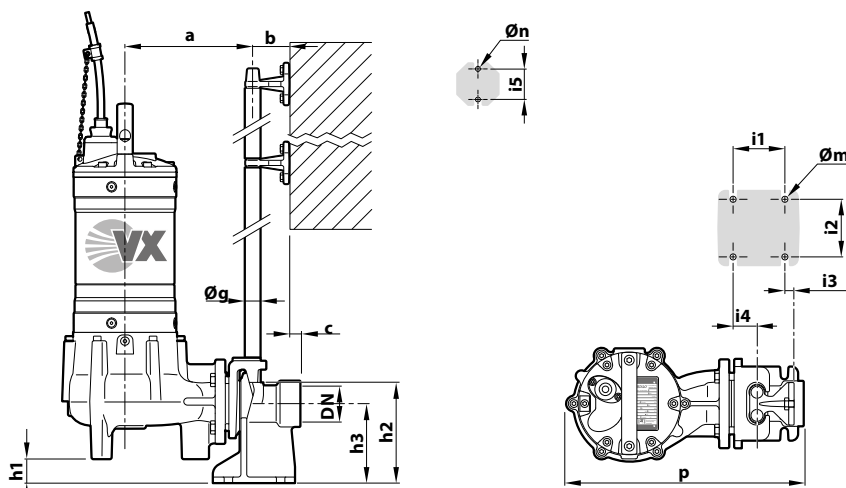
for Ø 3/4" guide tubes



for guide tubes Ø 2"

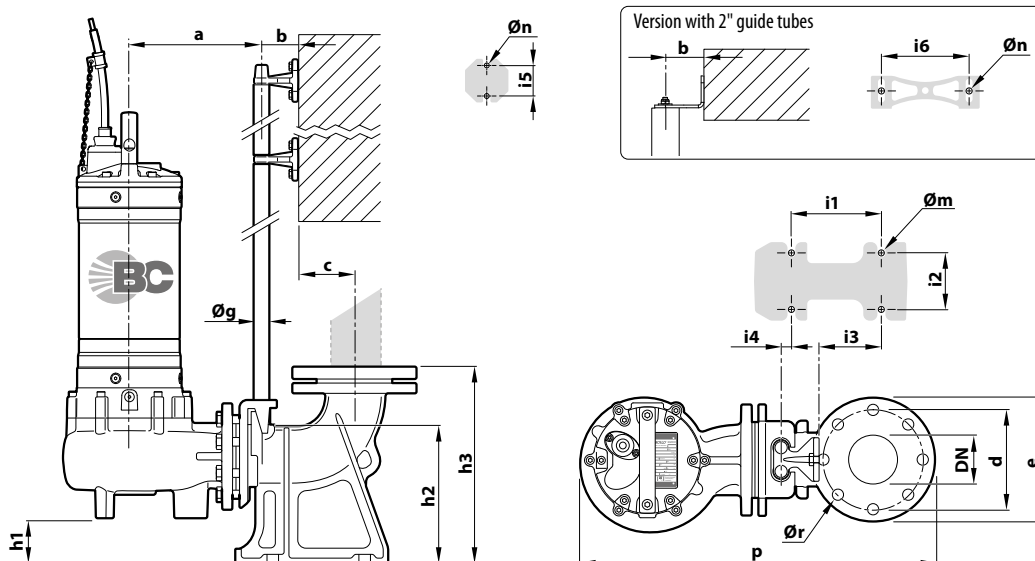


DIMENSIONS (HORIZONTAL delivery version)



TYPE	Solid bodies mm	PORT DN	DIMENSIONS mm														
			a	b	c	p	h1	h2	h3	i1	i2	i3	i4	i5	Øg	Øm	Øn
VX4 /50	Ø 50	2"	214	61	17	400	30	165	130	85	94	16	40	50	¾"	12	11

DIMENSIONS (Version with VERTICAL delivery)



※ Version with ¾" guide tubes

TYPE	Solid bodies mm	PORT DN	DIMENSIONS mm																	
			a	b	c	d	e	p	h1	h2	h3	i1	i2	i3	i4	i5	Øg	Øm	Øn	Ør
VX4 /50	Ø 50 mm	2½"	211	61	52	125	165	506	28	164	216	120	72	62	3	50	¾"	14	11	18
VX4 /65	Ø 65 mm	3"	213		69	150	190	537	48	216	280	130	112	84	15					
BC4 /50	Ø 50 mm		222					553	19											

※ Version with 2" guide tubes

TYPE	Solid bodies mm	PORT DN	DIMENSIONS mm															
			a	b	c	d	e	p	h1	h2	h3	i1	i2	i3	i4	i5	i6	Øg
VX4 /50	Ø 50 mm	3"	319	86	95	160	200	706	107	264	392	250	150	34	-	80	186	2"
VX4 /65	Ø 65 mm							697	86									
VX4 /80	Ø 80 mm							714	57									
BC4 /50	Ø 50 mm							714	57									